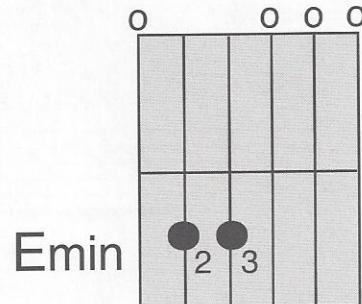
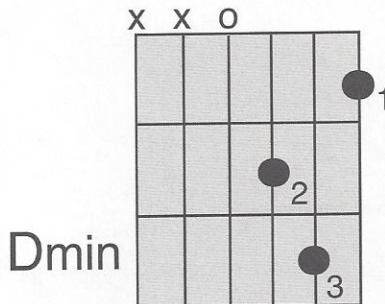
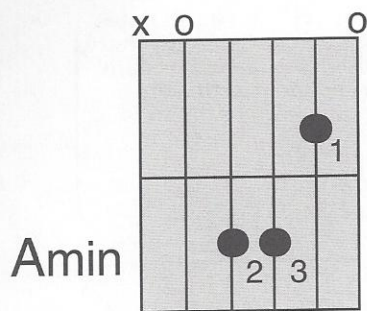
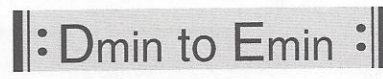
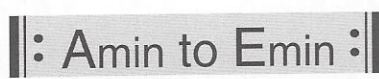
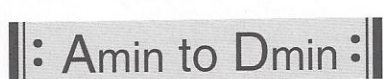


Minor Chords

Amin, Dmin, & Emin

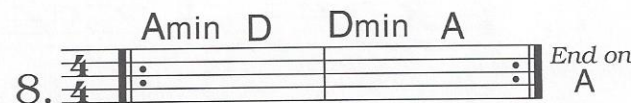
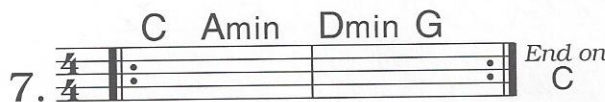
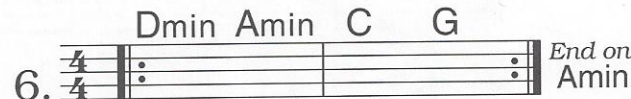
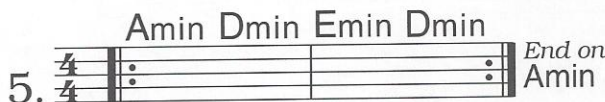
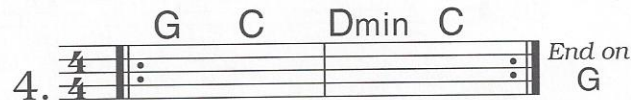
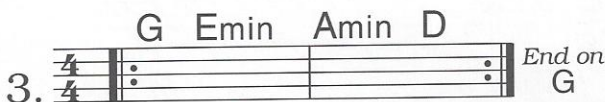
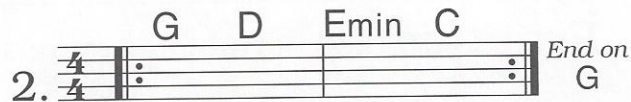
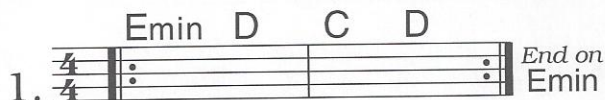


Practice the following chord combinations.
 Play each pair of chords over & over, giving each chord just one strum.
 Work on quick, smooth switching from one chord to another.



Chord Progressions

Practice each progression over & over.
 Play quarter notes at first. Then use strums 1-4 from page 5.



The abbreviation "min" is the clearest way to indicate "minor" in a chord symbol. However, "mi" is equally acceptable, and is often used in this book. Shorter notations, like the single letter "m", or a minus sign (-) are also standard.

sensibleguitar.com