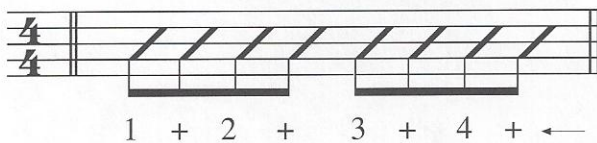


# Strums/Rhythms

## Eighth notes

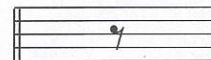
### EIGHTH NOTES (ONE HALF OF A BEAT EACH)



Consecutive eighth notes are generally connected with a line called a beam. A single eighth note is indicated by attaching a "flag" to the stem:



### EIGHTH REST (ONE HALF BEAT OF SILENCE)

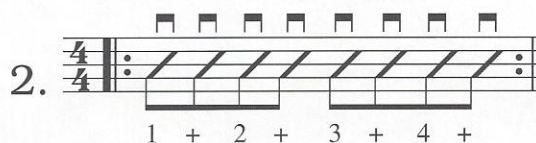
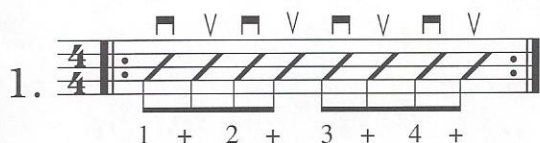


**Practice** these rhythms over & over.

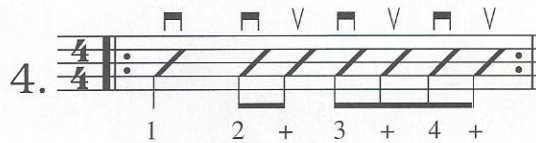
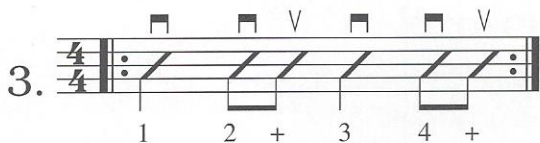
Strumming direction:  $\square$  = Down  $\nabla$  = Up

Eighth notes are usually played "down, up"...

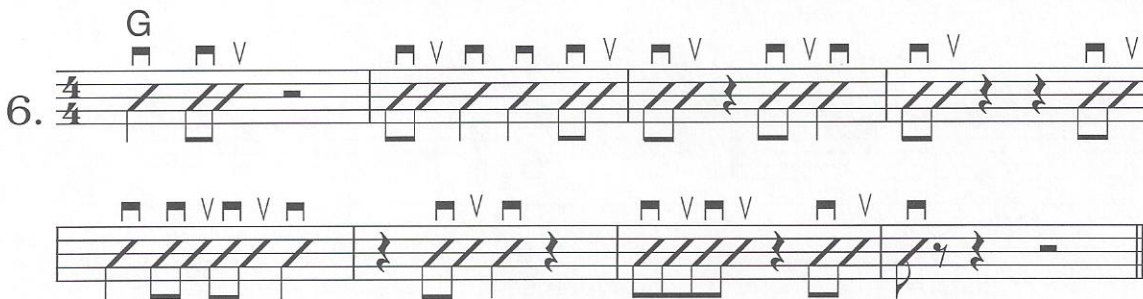
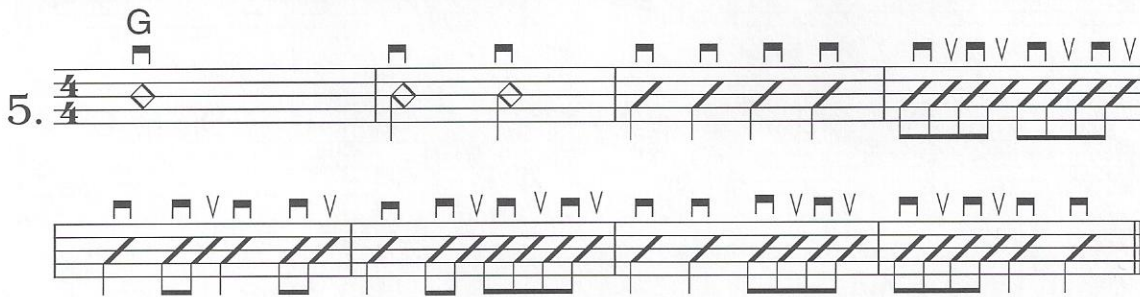
...but are sometimes played "all down".



Combining quarters and eighths:



**Practice** these strumming exercises.



sensibleguitar.com